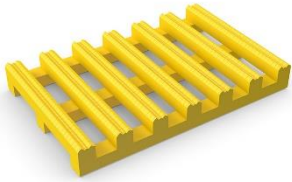
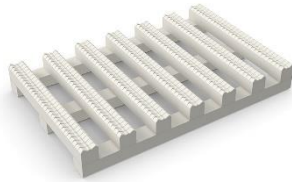


## TECHNICAL INFORMATION SHEET

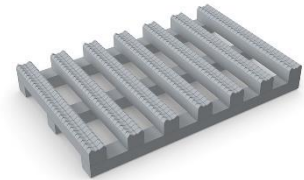
### X-Tred™ Walkway Pad



**Yellow**  
Item Number:  
W56TPO303X



**White**  
Item Number:  
W56TPO301X



**Gray**  
Item Number:  
W56TPO302X

### Product Information

#### Description:

The Firestone X-Tred Walkway Pad is a highly specialized UV Resistant pad made from 100% TPO and designed to provide protection from essential rooftop services and traffic and maintain the integrity of the existing roof surface. X-Tred Walkway pads can be installed loose-laid on top of the existing adhered TPO or EPDM roofing assemblies, making installation simple. Where Design Wind Speed exceeds 90 mph (145 km/h) or a wind speed warranty coverage greater than 55 mph (88 km/h) is required, X-Tred Walkway Pads must be secured to the roof membrane system.

The X-Tred Walkway Pad can be applied on **adhered low-slope roofing projects (less than 2:12 slope)** including Firestone's UltraPly™ TPO, RubberGard™ EPDM, EcoWhite™ EPDM and Modified Bitumen roofing systems. There are two distinct sides of the X-Tred Walkway Pad: Side A with longer bars running parallel to the roll direction and Side B with shorter length bars running perpendicular to the roll length.

The X-Tred Walkway Pad is impact resistant in extremely cold climates. The top ribs have an embossed surface to provide slip-resistance and ensure a good grip while walking. The effective combination of an open grid format and 9/16" (14 mm) height enables self-draining and makes the X-Tred Walkway Pad an effective walking surface even in areas where standing water may occur. **X-Tred Walkway Pads are acceptable for use on low-slope Firestone TPO and EPDM adhered systems as well as on Firestone mechanically attached TPO and EPDM roofing systems, provided they are secured to the roof to prevent blow off.**

#### Method of Application for Adhered Systems:

- UltraPly TPO
- RubberGard EPDM
- RubberGard EcoWhite EPDM
- Modified Bitumen
- In field areas of roof and for projects with a maximum wind speed warranty of up to 55 mph (88 km/h) or a Design Wind Speed of 90 mph or less
  1. The design of the X-Tred Walkway Pad makes installation quick, easy and maintenance free.
  2. The X-Tred Walkway Pad is loose laid, in the appropriate areas, over the roof surface. X-Tred Walkway Pad is not recommended for installation in the roof perimeter and corner areas. If required in these areas, the X-Tred walkway pad must be secured to the roof.
  3. Install with Side A as top surface on Firestone UltraPly TPO, RubberGard EPDM, RubberGard EcoWhite EPDM systems. Install with Side B as top surface on Firestone's Modified Bitumen roof systems.

# TECHNICAL INFORMATION SHEET

## X-Tred™ Walkway Pad

### Method of Securement for:

- Mechanically attached UltraPly TPO Roofs
- Where Design Wind Speeds exceed 90 mph (145 km/h) or when a warranty includes increased wind speed coverage of up to 72 mph (116 km/h)
- For added security and as required for special wind uplift resistance in high wind prone areas or in roof perimeter and corner areas, loop TPO attachment strips through the X-Tred Walkway Pad as follows:
  1. Cut strips of UltraPly TPO membrane to ¾" (19 mm) wide x 10" (254 mm) long.
  2. Thread the TPO strips through the X-Tred pad at the first loop using two 90-degree folds.  
**NOTE:** Avoid attaching strips over TPO seams.
  3. Using a hot air welding tool, weld the ends of the UltraPly TPO strip (weathering side up) onto the field membrane.
  4. Space the strips approximately 36" (914 mm) apart on both sides of the walkway pad and at the roll ends.
  5. For a full 30" (762 mm) x 30' (9 m) roll, there should be 20 attachment strips installed, i.e. 10 strips per side (Refer to Detail Drawing UT-M-7).

### Storage:

Store material in original unopened packaging, in a dry area, away from sources of physical damage or chemical contamination.

### Precautions:

- Refer to Safety Data Sheet (SDS) for additional information.
- Do not expose walkway material to any open flames or ignition sources.
- Not for use on Firestone PVC installations (use Firestone PVC X-Tred Walkway Pad on PVC installations).

### LEED® Information:

Post-Consumer Recycled Content: 0%  
 Post Industrial Recycled Content: 0%  
 Manufacturing Location: Valley Head, AL  
 \*NOTE: LEED® is a registered trademark of the U.S. Green Building Council.

### Packaging

Property	Value
Roll Width	30" (762 mm)
Roll Length	30' (9.1 m)
Roll Weight	88 lb (40 kg)
Rolls Per Pallet	6

### Typical Properties

Property	Value	ASTM Test Method
Overall Thickness	0.55" ± 0.02" (14 mm ± 0.5 mm)	ASTM D 751
Weight	1.3 lb/ft² (6.3 kg/m²)	---
Width	30" ± 0.5" (762 mm ± 13 mm)	ASTM D 751
Roll Length	30' + 0.5', -0 (9.1 m + 0.15 m, -0)	---

Please contact Firestone Technical Services Department at 1-800-428-4511 for further information.

*This sheet is meant to highlight Firestone products and specifications and is subject to change without notice. Firestone takes responsibility for furnishing quality materials which meet published Firestone product specifications or other technical documents, subject to normal roof manufacturing tolerances. Neither Firestone nor its representatives practice architecture. Firestone offers no opinion on and expressly disclaims any responsibility for the soundness of any structure. Firestone accepts no liability for structural failure or resultant damages. Consult a competent structural engineer prior to installation if the structural soundness or structural ability to properly support a planned installation is in question. No Firestone representative is authorized to vary this disclaimer.*